

LC: Can I describe the life cycle of a flowering plant?

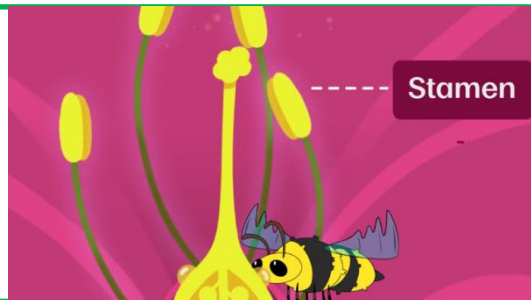
Date: \_\_\_\_\_



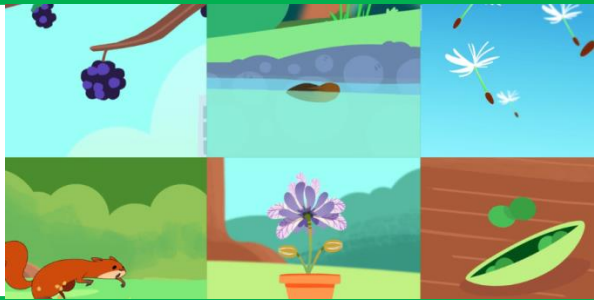
Plant grows - The seed begins to grow roots which provide water and nutrients to the plant. Leaves grow to provide food for the plant through photosynthesis.



Pollination - During the adult stage of the plant the plant has a flower to attract pollinators such as bees and birds. They transport the pollen between different plants.



Seed formation - The pollen is transported from the stamen of one plant to the stigma of another allowing the egg in the plant to form into a seed.



Seed dispersal - The seeds are dispersed in a variety of methods including air, water, animals and gravity. This allows the plant to spread.