

### Homework Tasks

- Online Maths - set on a Monday and due Fridays
- Learning Journey— set on Friday and due in the following Thursday

### Learning for Life

New Year's Resolutions  
SRE – Puberty  
Body image, stereotypes, prejudice,  
equal opportunities  
Money Matters  
Friendship

### Art

Create a relief print block  
Textile printing in the style of designer  
Althea McNish  
Collage using natural materials



### Languages

Spanish

### PE/Games

Gymnastics  
Traditional dance - Haka  
Basketball  
Rugby

### Music

Brazilian Percussion  
Beat Boxing

### Maths

Number, Measures  
Geometry and statistics  
Shape and space  
Fractions

# MIGRATION & EXPLORATION

Year 5  
Spring 2024

### Migration

To explore reasons and motivations for family migration and moving  
Show on maps historical human migratory movement across the world and give reasons for this  
Timeline of migration  
Complete a case study comparing migration to the UK from the Caribbean on HMS Windrush and migration due to war, conflict and political persecution

### School Trip

**Greenwich Maritime Museum & Cutty Sark**

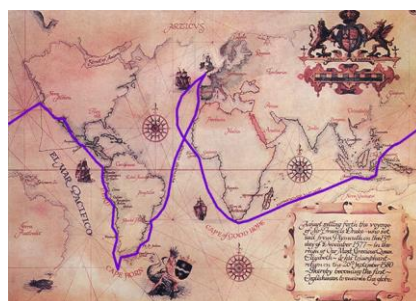
**Wednesday 27<sup>th</sup> March 2024**

### Exploration

Create a famous explorers timeline  
Compare the journeys of the first man (Ferdinand Magellan) and the first woman (Jeanne Baret) to circumnavigate the globe.  
Research information on the life of a famous explorer  
Explain the dangers of exploration  
Investigate technology which has affected exploration throughout history  
Explain reasons for colonisation and the formation of the British Empire.

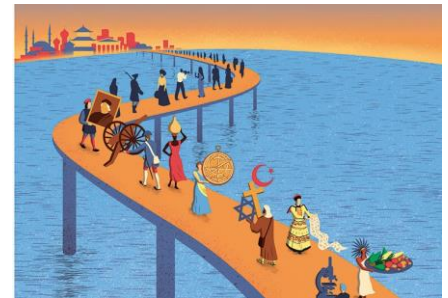
### Geography Fieldwork

Conduct an exploration into the woods to locate the most suitable camping site to set up an explorer' training camp  
Draw accurate maps of the camp and explain its suitability  
Grid references  
Map symbols



### English

- Play script of a scene from our class novel Brightstorm
- Information guide to explore different terrains for the crew members in Brightstorm
- Speech persuading family to let you go on the ship Windrush to migrate and make a new life in Britain
- Migration Poetry
- Write a short story about Shackleton's exploration journey from the point of view of one of his expedition members



### Geography

Landscape features of different terrains

- jungle
- polar regions
- mountains and forests
- oceans and rivers
- deserts

Mapping skills - compass points,  
4 figure grid references, latitude and longitude lines  
Use 8 compass points



### DT

Shelter building

### Computing

Code.org - coding, programming and algorithms

### Science

Earth and Space  
Animals including humans